



GMT MONTHLY MEMBERSHIP PROGRESS REPORT

Results as of: 6/30/2017

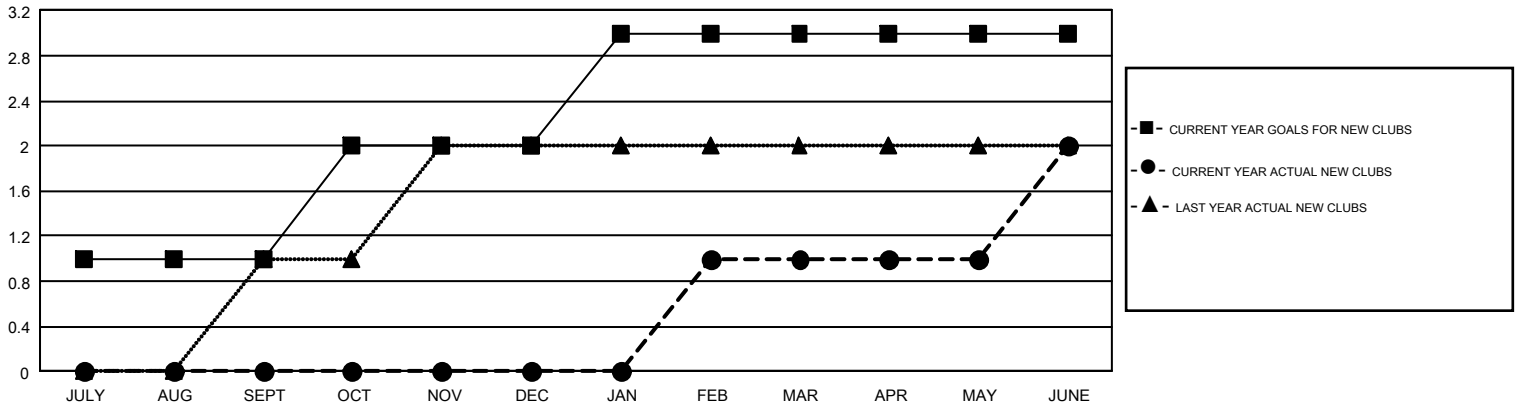
GMT Constitutional Area 2, Group C

GMT: OPEN

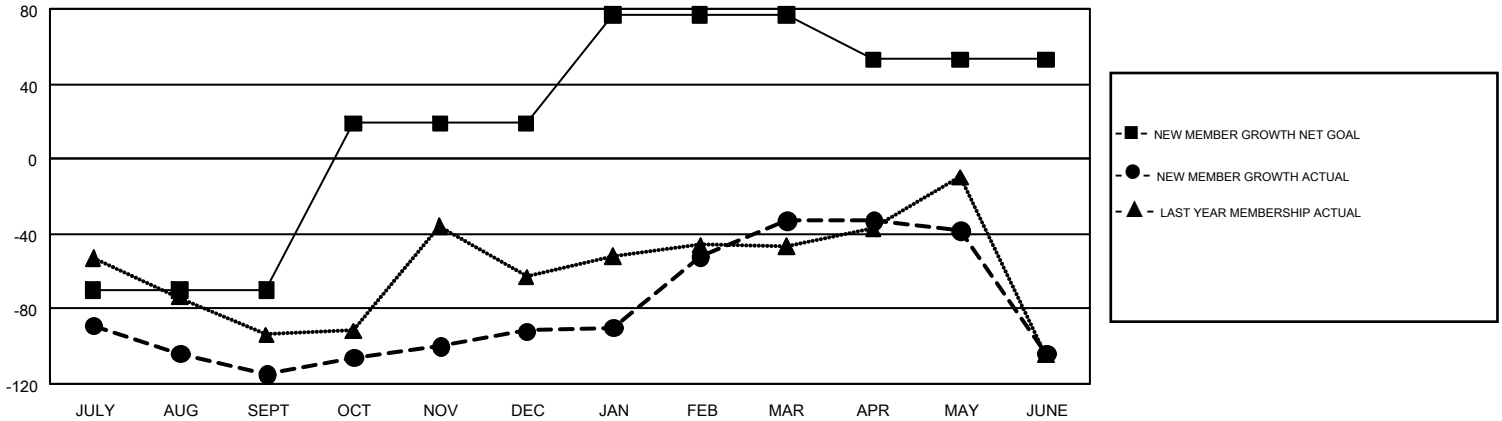
REPORT DOES NOT INCLUDE CLUBS IN UNDISTRICTED AREAS.

Clubs				Members			
RESULTS FOR 2016-2017				RESULTS FOR 2016-2017			
QUARTER	NEW CLUB GOAL	NEW CLUBS	DROPPED CLUBS	QUARTER	NEW MEMBER GROWTH NET GOAL (not reinstated or transfers)	NEW MEMBER GROWTH ACTUAL (not reinstated or transfers)	DROPPED MEMBERS ACTUAL (including transfers)
JULY/AUG/SEPT	1	0	1	JULY/AUG/SEPT	-70	45	160
OCT/NOV/DEC	1	0	0	OCT/NOV/DEC	89	117	94
JAN/FEB/MAR	1	1	0	JAN/FEB/MAR	58	125	66
APR/MAY/JUNE	0	1	3	APR/MAY/JUNE	-24	158	229

GOALS AND ACTUAL NEW CLUBS CUMULATIVE



GOALS AND ACTUAL MEMBERS CUMULATIVE



DROPPED CLUBS: 4	122 CLUBS OF 170 ADDED 1 OR MORE NEW MEMBERS	GENDER DISTRIBUTION
DROPPED MEMBERS		MALE 2,708 (66.83%)
DECEASED 49		FEMALE 1,344 (33.17%)
CLUB CANCELLED 8	CLICK HERE FOR CUMULATIVE MEMBERSHIP DATA	TOTAL FAMILY UNIT MEMBERS 696
OTHER 491		FAMILY MEMBERS PAYING HALF DUES 354
TOTAL 548		